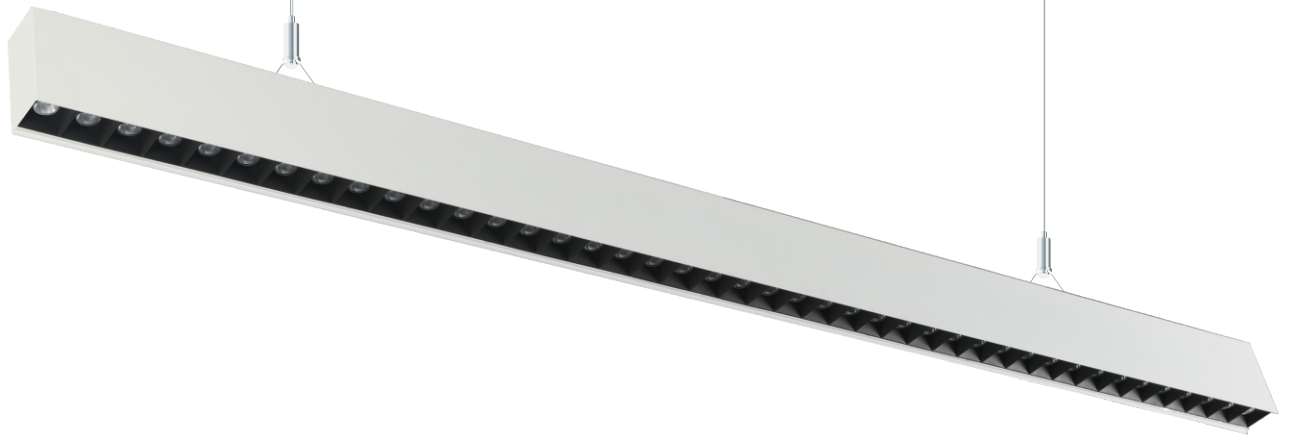


LED LINEAR LIGHT SPECIFICATION

Shenzhen Liris lighting.,Co LTD



LITAN Linear Fixtures



FEATURES



Various optical accessories available



Various light distribution available



Environmentally Friendly



Muti Sizes for option



Can be spliced



Anti-glare design

Product configurations

Dimensions

Color

White(RAL9016) Black(RAL9005) Gray(RAL7042)

Optical accessory

Lens+reflector Linear lens PC Cover Microcrystal PS cover

Light distribution

Back light 67% Direct+33% Indirect 50% Direct+50% Indirect

Basic parameters

Model	Light distribution	Length	Power	Lumen	CRI	Optical accessory	LEDs type	LEDs/m	Lumen efficiency
LRS-LF-01004-X	Direct	1192mm	30W	3000lm	Ra>80	Linear lens	2835	42	100lm/w
						Lens+Reflector		194	
						PC cover/Microcrystal PS cover		144	
LRS-LF-01005-X	Direct	1438mm	40W	4000lm	Ra>80	PC Cover/Microcrystal PS cover	2835	180	100lm/w
LRS-LF-01010-X	Direct	2870mm	80W	8000lm	Ra>80	PC Cover/Microcrystal PS cover	2835	360	100lm/w
LRS-LF-01004-X	Indirect & Direct	1192mm	36W	1500+3000lm	Ra>80	Linear lens	2835	288	125lm/w
						Lens+Reflector		114	
						PC cover/Microcrystal PS cover		216	
LRS-LF-01005-X	Indirect & Direct	1438mm	60W	2000+4000lm	Ra>80	PC Cover/Microcrystal PS cover	2835	276	100lm/w
LRS-LF-01010-X	Indirect & Direct	2870mm	124W	4000+8000lm	Ra>80	PC Cover/Microcrystal PS cover	2835	552	100lm/w

Product accessories



Connection bracket



Installation clip



Suspension



LIRAN Linear Fixtures



FEATURES



Various light distribution available



Environmentally Friendly



Muti Sizes for option

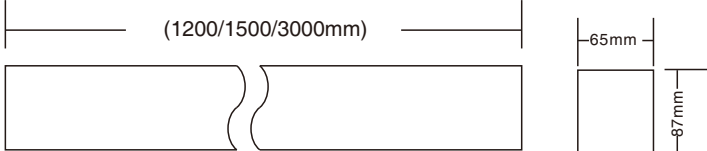





Can be spliced







Anti-glare design

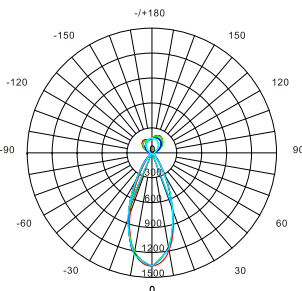
Product configurations

Dimensions 

Color  White(RAL9016)  Black(RAL9005)  Gray(RAL7042)

Optical accessory  Lens+reflector

Light distribution  Back light  67% Direct+33% Indirect  50% Direct+50% Indirect



Basic parameters

Model	Light distribution	Length	Power	Lumen	CRI	LEDs type	LEDs/m	Lumen efficiency
LRS-LF-02004-X	Direct	1200mm	28W 36W	3000lm 4000lm	Ra>80	2835	90	110lm/w
LRS-LF-02005-X	Direct	1500mm	28W 36W 48W	3000lm 4000lm 5000lm	Ra>80	2835	110	110lm/w
LRS-LF-02010-X	Direct	3000mm	54W 72W 90W	6000lm 8000lm 10000lm	Ra>80	2835	220	110lm/w
LRS-LF-02004-X	Indirect & Direct	1200mm	40W 54W	1500+3000lm 3000+3000lm	Ra>80	2835	138	110lm/w
LRS-LF-02005-X	Indirect & Direct	1500mm	54W 72W	2000+4000lm 4000+4000lm	Ra>80	2835	165	110lm/w
LRS-LF-02010-X	Indirect & Direct	3000mm	108W 144W	4000+8000lm 8000+8000lm	Ra>80	2835	330	110lm/w

Product accessories



Connection bracket



Installation clip



Suspension



LINIA Linear Fixtures



FEATURES



Various light distribution available



Environmentally Friendly



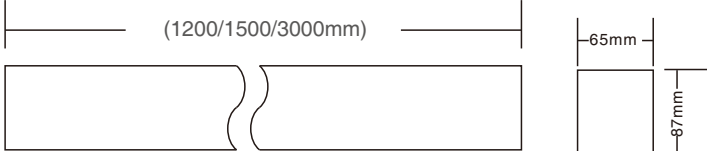
Muti Sizes for option




Can be spliced

Product configurations

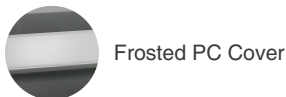
Dimensions



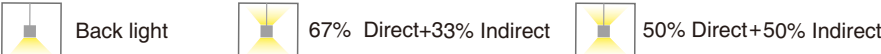
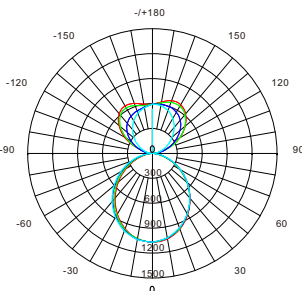
Color



Optical accessory



Light distribution

Basic parameters

Model	Light distribution	Length	Power	Lumen	CRI	LEDs type	LEDs/m	Lumen efficiency
LRS-LF-03004-X	Direct	1200mm	24W 32W	4000lm	Ra>80	2835	216	125lm/w
LRS-LF-03005-X	Direct	1500mm	24W 32W 40W	3000lm 4000lm 5000lm	Ra>80	2835	264	125lm/w
LRS-LF-03010-X	Direct	3000mm	48W 62W 76W	6000lm 8000lm 10000lm	Ra>80	2835	528	125lm/w
LRS-LF-03004-X	Indirect & Direct	1200mm	36W 48W	1500+3000lm 3000+3000lm	Ra>80	2835	324	125lm/w
LRS-LF-03005-X	Indirect & Direct	1500mm	48W 62W	2000+4000lm 4000+4000lm	Ra>80	2835	396	125lm/w
LRS-LF-03010-X	Indirect & Direct	3000mm	96W 124W	4000+8000lm 8000+8000lm	Ra>80	2835	792	125lm/w

Product accessories



Connection bracket

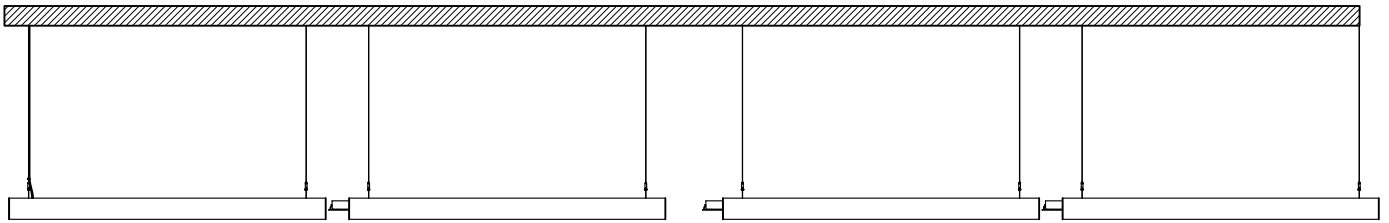


Installation clip



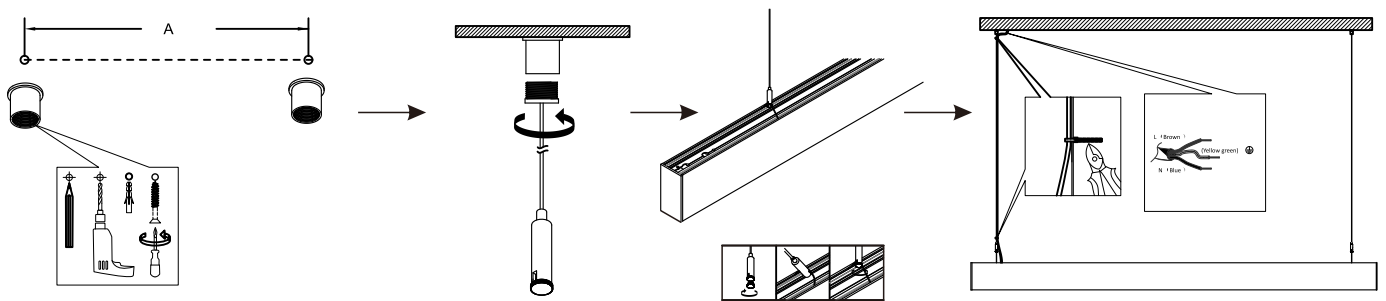
Suspension

Connection diagram



- For connection installations, ensure that the safe voltage range is not exceeded to prevent dangerous accidents.

Installation diagram



1. For the suspension point spacing A, please refer to the following range: 1.5M long lamp, A is 800~1300mm; 2.4M long lamp, A is 1300~2200mm; 3M long lamp, A is 1700~2700mm.
2. During installation, please make sure the circuit is power off to avoid electric shock.

Precautions

1. Do not put the product in a high temperature environment (above 60°) or put it into fire.
2. Avoid product exposure to the outside world and direct rain.
3. To avoid damage to internal optical accessories, please do not collide or drop the product from high places.



LIRIS[®]
LIGHTING

Shenzhen Liris Lighting Co., Ltd

Factory Add: Building B, Jingxiang Industrial Park, Guanhu
Street, Longhua District, Shenzhen, China, 518110

Tel: +86-755-28094270

Fax: +86-755-61658345

Email: inquiry@liris-lighting.com

Web: www.liris-lighting.com